



Our *Future* in FOCUS

 The *Danish Home*
Foundation





Consul General Jakob Skaarup Nielsen and Vice Consul Lisbeth Christensen accept the 2019 Essence Award from The Danish Home of Chicago's President/CEO Scott L. Swanson.

“You could say we go hand in hand,” said Consul General Jakob Skaarup Nielsen about the Consulate General of Denmark in Chicago’s longtime relationship with The Danish Home. “It’s important to have an institution that reaches back in time but is also here for today,” said Nielsen. “The Danish Home still upholds the same basic Danish values and traditions, especially where care of the elderly is concerned.”

JAKOB SKAARUP NIELSEN
CONSUL GENERAL

Warmth...
Peacefulness...
Beauty... Comfort...
Companionship...
Tradition...

**Each of these words describes the
Danish Home of Chicago.**

*F*or over 125 years, The Danish Home has served older adults true to our traditions and culture, in a home-like setting, with outstanding dining services, abundant wellness-oriented activities, and opportunities for participation that encourage each resident to stay engaged in all that life has to offer.

The Danish Home began as a dream of 12 Danish women who wanted to ensure that no one from the homeland living in the Chicago area would ever have to worry about growing old and being alone.

Their dream has expanded and changed over the years, but at our heart we are still the same – a high-quality senior community. What sets us apart is our size – we are intentionally small – a “boutique” senior living community providing individualized care and attention to 40 individuals from all over the greater Chicago area – and even beyond.



“We want every resident to feel like family and be welcomed into our home.”

SCOTT L. SWANSON, PRESIDENT



What is even more special is the care and nurturing we provide each of our residents. Loneliness vanishes as each person finds new friends and new reasons to stay engaged in life.

From the food – which regularly features Danish and Scandinavian recipes – to the activities: Scandinavian baking, museum trips, Danish movies, chime choir, men's gatherings – The Danish Home is the place of choice for people who are ready to live out their retirement years in a beautiful, tranquil, home-like setting.



"We are from Denmark. We come to the picnic every year. We always planned to move here and are so glad we did!"


POUL & MARGIT KJELDBJERG





PEOPLE BLOSSOM HERE





Over the years, we have reconfigured residents' apartments, dining area, the gathering area, and the rest of the community to maximize our residents' comfort, their feeling of being home, and to adapt to their changing needs.

As we look forward to the years ahead, we know it is time to make additional upgrades to our space. The face of aging is changing. Our residents come to us at a point later in life than ever before; and often this means they may need more assistance.

The Danish Home has perfected the ability to serve couples, enabling them to live out their lives together, providing the services each may need.

We are embarking on additions and renovations so that The Danish Home will continue to be a high quality community, adapting to our residents' needs and preparing for the needs of those who come to us in the future.

Our plan is comprehensive and responds not only to the capital improvements we have already identified, but also looks to the evolution of care as older adults come to us with more technological awareness and capabilities.

THE DINING AREA AND KITCHEN

We believe that healthy eating in a pleasant environment is a vital part of not only the social life of our residents, but also their wellness. With that in mind, we will reconfigure the dining room so that residents and visitors can enjoy views of our garden.

We will move the dining room west looking onto our garden, and add windows onto our central courtyard to enhance the dining experience. We will also add a bistro space at one end of the dining room for more casual gatherings and entertaining.

In order to provide that enhanced dining experience, we will completely renovate and upgrade our kitchen. We will add modern appliances and additional preparation and storage areas, in order to continue to provide the delicious and nutritious meals so appreciated by our residents and their families, friends and visitors.

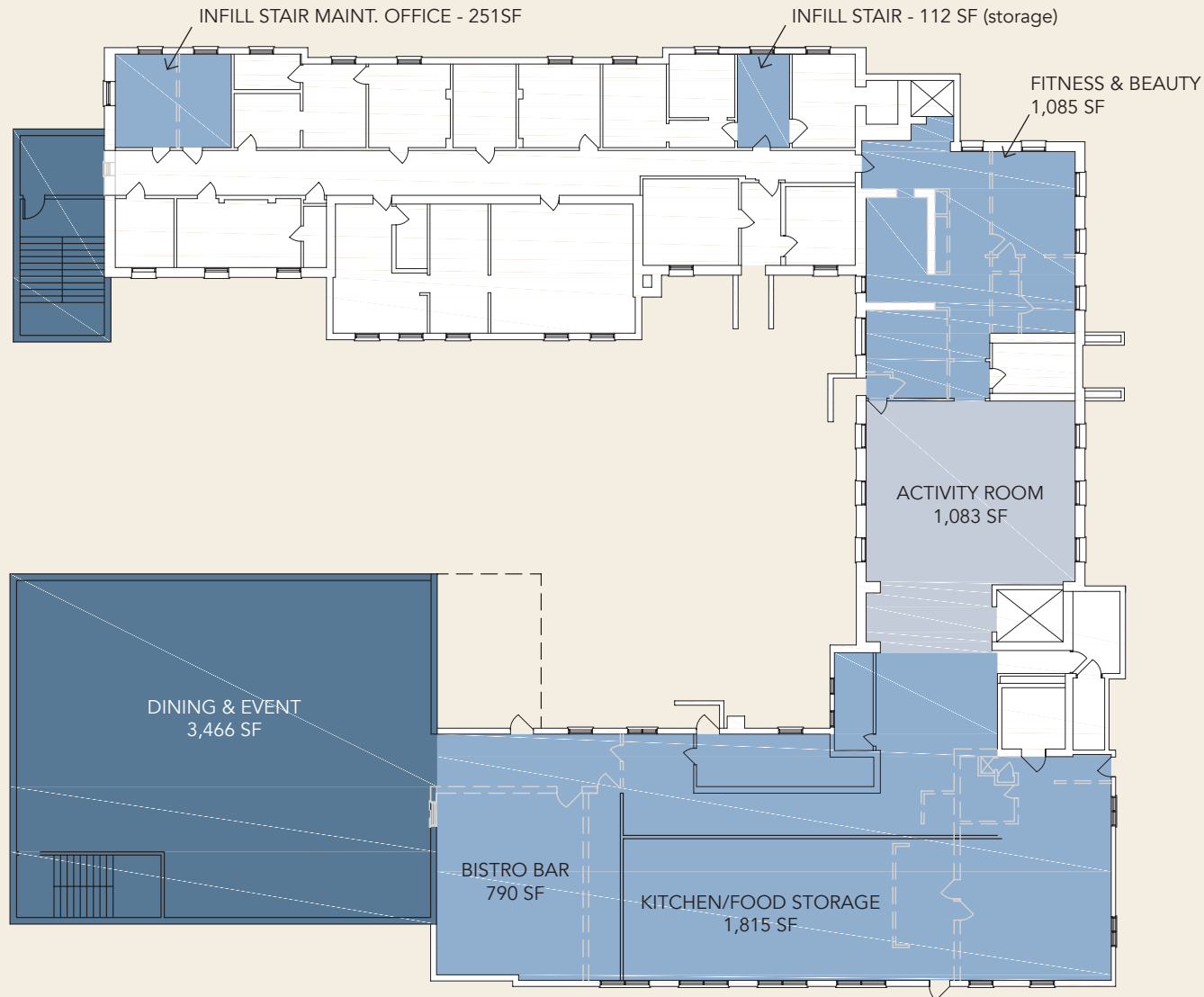
THE GATHERING SPACE, HEALTH AND FITNESS, GARDENS

The Gathering Space on the garden level, including the Fitness and Beauty area, will also be renovated and refurbished with new carpet, paint, wallpaper and furniture.

Because we want to encourage residents to take advantage of the beautiful grounds at The Danish Home, we will build specific areas for walking, reflection and gardening, all in a safe and secure environment. We will install new pathways, fountains and landscaping to create peaceful and soothing areas for our residents and their families and guests to enjoy.

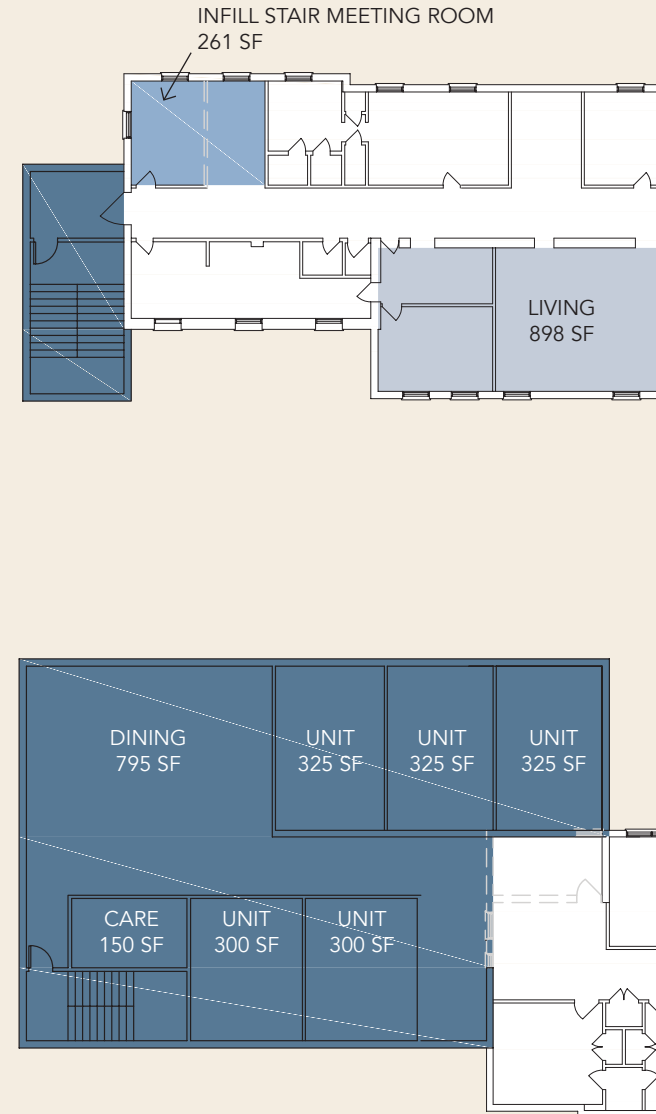
CAPITAL IMPROVEMENTS

THE DANISH HOME EXPANSION CHICAGO, IL



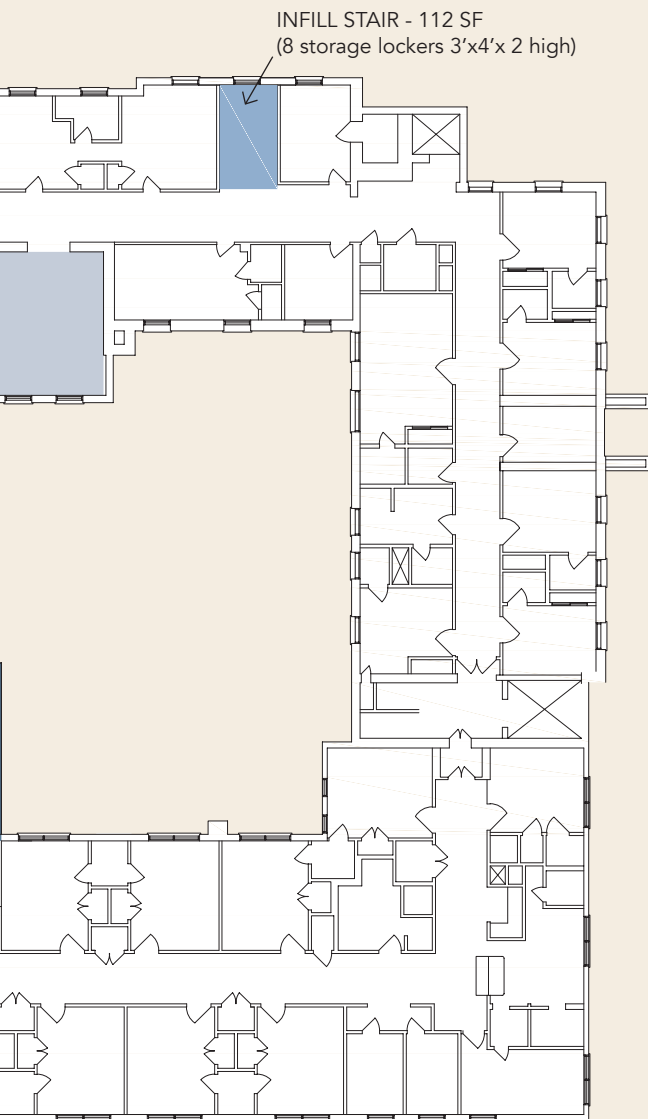
GARDEN LEVEL SCOPE DIAGRAM

1" = 20'-0"



FIRST FLOOR SCOPE DIAGRAM

1" = 20'-0"



LIGHT REHAB 898 SF
 TOTAL REHAB 720 SF
 NEW CONSTRUCTION 4,312 SF



SECOND FLOOR SCOPE DIAGRAM
1" = 20'-0"

LIGHT REHAB 000 SF
 TOTAL REHAB 720 SF
 NEW CONSTRUCTION 4,312 SF

HEALTH CARE AND INDEPENDENT LIVING

On the first floor Health Care Suite, five private rooms will be added and some semi-private rooms will be converted to private rooms. This will increase the number of private rooms from one to ten.

A new Dining Room will be created overlooking the garden for our Health Care residents.

On the second floor, four apartments will be added to our Independent Living area to better serve the community.



“I think the plans are exciting – I love the idea of moving the dining room to see the garden.”

LINDA STEFFENSEN

DANISH PIONEER PRESIDENT AND CEO AND
THE DANISH HOME FOUNDATION DEVELOPMENT MANAGER

CHARITABLE CARE

Our residents are also family, so we want to ensure that every one of them can remain at The Danish Home, free of financial worry. Besides endowment and capital, another goal of this Campaign is to add at least \$2.4 million to our "Charitable Care Fund" to supplement the needs of residents whose financial capacity has dwindled.

Each year, The Danish Home provides at least \$425,000 in charitable care to residents who, for whatever reason, have reduced or no ability to pay. We do not turn them out. Instead, thanks to generous gifts, we will do as we always have - continue to provide the same quality of care as we do every other resident. Once we have completed this campaign, we will have increased the size of the Charitable Care Fund from its current level of \$5.8 million.

“We are really glad the Board is thinking about the future.”

HANNE & GENE BEUBE



ENDOWMENT

Finally, we have worked hard to build our endowment over the last several years. And that has enabled us to maintain a stable budget, with only modest increases in the cost of care. We hope to eventually increase our endowment to \$20 million through outright gifts, pledges and bequests. We gratefully accept designated endowment funds, whether those are for resident activities, capital improvements, or other options.



WHAT WILL ALL THIS GROWTH COST?

Our goal is \$10,500,000.

Of that total, \$8.1 million will fund the capital needs, \$2.4 million will add to the Charitable Care Fund, and any additional funds raised will go toward the Endowment as well as provide funding for any contingencies we encounter.

Naming opportunities are available for those who wish to honor our heritage, our mission and/or families and friends.

New Dining Room: \$500,000 (Pledged)

New Kitchen: \$500,000 (Pledged)

Remodeled Ground Floor Living Room and Gathering Space: \$500,000

4 New Independent Apartments @ \$125,000 each: \$500,000

5 Health Care Suites Private Rooms @ \$90,000 each: \$450,000 (Pledged)

Garden Enhancement: \$400,000

New Bistro area: \$150,000 (Pledged)

New Small Dining Room serving Residents in Health Care: \$75,000

Remodeling of Fitness and Beauty area: \$75,000 (Pledged)

Fund for Charitable Care: \$2,400,000 (Naming in Increments of \$10,000)

BOARD OF DIRECTORS

THE DANISH ASSOCIATION

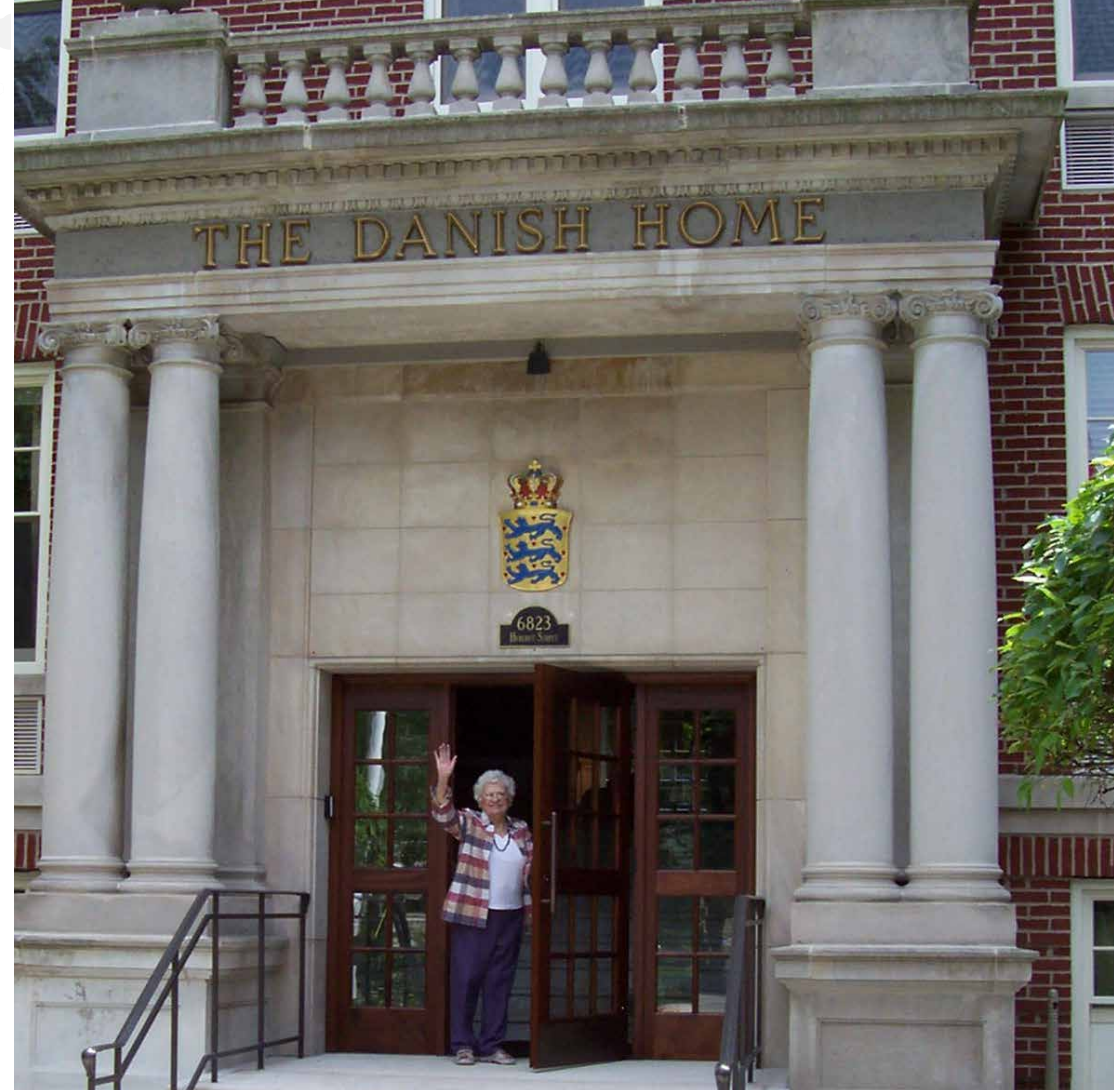
JEFF ANDERSON, CO-CHAIR
PAUL PEDERSEN, CO-CHAIR
KAREN FRINK, SECRETARY
SCOTT L. SWANSON, PRESIDENT/CEO
NEIL ANDERSEN, DIRECTOR
KIM ERIKSEN, DIRECTOR
KRISTIE HANSEN-MENDEZ, DIRECTOR
CHRISTINE HAXAGER, DIRECTOR
STAN HEIDEMANN, DIRECTOR
DAWN JENSEN, DIRECTOR
ELLEN STOLFA, WOMEN'S AUXILIARY PRESIDENT

THE DANISH HOME OF CHICAGO

SCOTT L. SWANSON, PRESIDENT/CEO
STAN HEIDEMANN, VICE-CHAIR
KIM ERIKSEN, SECRETARY
FRED SAVIANO, TREASURER

THE DANISH HOME FOUNDATION

JEFF ANDERSON, CHAIRMAN
SCOTT L. SWANSON, PRESIDENT/CEO
PAUL PEDERSEN, VICE-CHAIR
DAWN JENSEN, SECRETARY
PETER ØRUM, DIRECTOR
BRUCE BRO, DIRECTOR



The Danish Home of Chicago
The Danish Home Foundation
5656 N. Newcastle Avenue
Chicago, IL 60631

☎ (773) 775-7383
✉ info@DanishHomeofChicago.org
🌐 DanishHomeofChicago.org
📘 facebook.com/danishhomechicago



HOME.

HERITAGE.

HOPE.

