



Our *Future* in FOCUS



Jakob Skaarup Nielsen, Former Consul General and late Vice Consul Lisbeth Christensen accept the 2019 Essence Award from The Danish Home of Chicago's President/CEO Scott L. Swanson.

“You could say we go hand in hand,” said Former Consul General Jakob Skaarup Nielsen about the Consulate General of Denmark in Chicago’s longtime relationship with The Danish Home. “It’s important to have an institution that reaches back in time but is also here for today,” said Nielsen. “The Danish Home still upholds the same basic Danish values and traditions, especially where care of the elderly is concerned.”

JAKOB SKAARUP NIELSEN
FORMER CONSUL GENERAL AND
CURRENT CEO OF HEALTHCARE DENMARK

Warmth...
Peacefulness...
Beauty... Comfort...
Companionship...
Tradition...

**Each of these words describes the
Danish Home of Chicago.**

*F*or over 130 years, The Danish Home has served older adults true to our traditions and culture, in a home-like setting, with outstanding dining services, abundant wellness-oriented activities, and opportunities for participation that encourage each resident to stay engaged in all that life has to offer.

The Danish Home began as a dream of 12 Danish women who wanted to ensure that no one from the homeland living in the Chicago area would ever have to worry about growing old and being alone.

Their dream has expanded and changed over the years, but at our heart we are still the same – a high-quality senior community. What sets us apart is our size – we are intentionally small – a “boutique” senior living community providing individualized care and attention to 40 residents from all over the greater Chicago area – and even beyond.



“We want every resident to feel like family and be welcomed into our home.”

SCOTT L. SWANSON, PRESIDENT



What is even more special is the care and nurturing we provide each of our residents. Loneliness vanishes as each person finds new friends and new reasons to stay engaged in life.

From the food – which regularly features Danish and Scandinavian recipes – to the activities: Scandinavian baking, museum trips, Danish movies, chime choir, men's gatherings – The Danish Home is the place of choice for people who are ready to live out their retirement years in a beautiful, tranquil, home-like setting.



We are from Denmark. We came to the picnic every year. We always planned to move here and are so glad we did!"


POUL & MARGIT KJELDBJERG





PEOPLE BLOSSOM HERE



 ver the years, we have reconfigured residents' apartments, dining area, the gathering area, and the rest of the community to maximize our residents' comfort, their feeling of being home, and to adapt to their changing needs.

As we look forward to the years ahead, we know it is time to make additional upgrades to our space. The face of aging is changing. Our residents come to us at a point later in life than ever before; and often this means they may need more assistance.

The Danish Home has perfected the ability to serve couples, enabling them to live out their lives together, providing the services each may need.

We have embarked on additions and renovations so that The Danish Home will maintain its high-quality community, continue to adapt to our residents' needs, and prepare for the needs of those who will come to us in the future.

Our plan is comprehensive, and includes not only the capital improvements we have already identified and begun to make, but also looks to the evolution of care as older adults come to us with more technological awareness and capabilities.

THE DINING AREA AND KITCHEN

We believe that healthy eating in a pleasant environment is a vital part of not only the social life of our residents, but also their wellness. With that in mind, we will reconfigure the dining room so that residents and visitors can enjoy views of our garden.

We will move the dining room west looking onto our garden, and add windows onto our central courtyard to enhance the dining experience. We will also add a bistro space at one end of the dining room for more casual gatherings and entertaining.

In order to provide that enhanced dining experience, we will make kitchen upgrades in our next phase. We will add modern appliances and additional preparation and storage areas, in order to continue to provide the delicious and nutritious meals so appreciated by our residents and their families, friends and visitors.

THE GATHERING SPACE AND GARDENS

The Gathering Space on the Garden Level has recently been renovated and refurbished with new carpet, paint, wallpaper and furniture.

Because we want to encourage residents to take advantage of the beautiful grounds at The Danish Home, we will build specific areas for walking, reflection and gardening, all in a safe and secure environment. We will install new pathways, fountains and landscaping to create peaceful and soothing areas for our residents and their families and guests to enjoy.

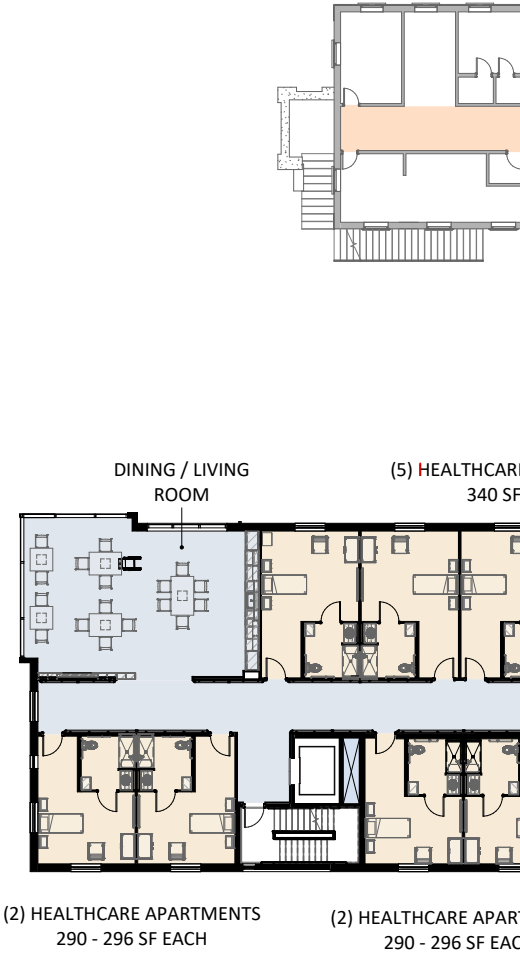
CAPITAL IMPROVEMENTS

THE DANISH HOME EXPANSION CHICAGO, IL

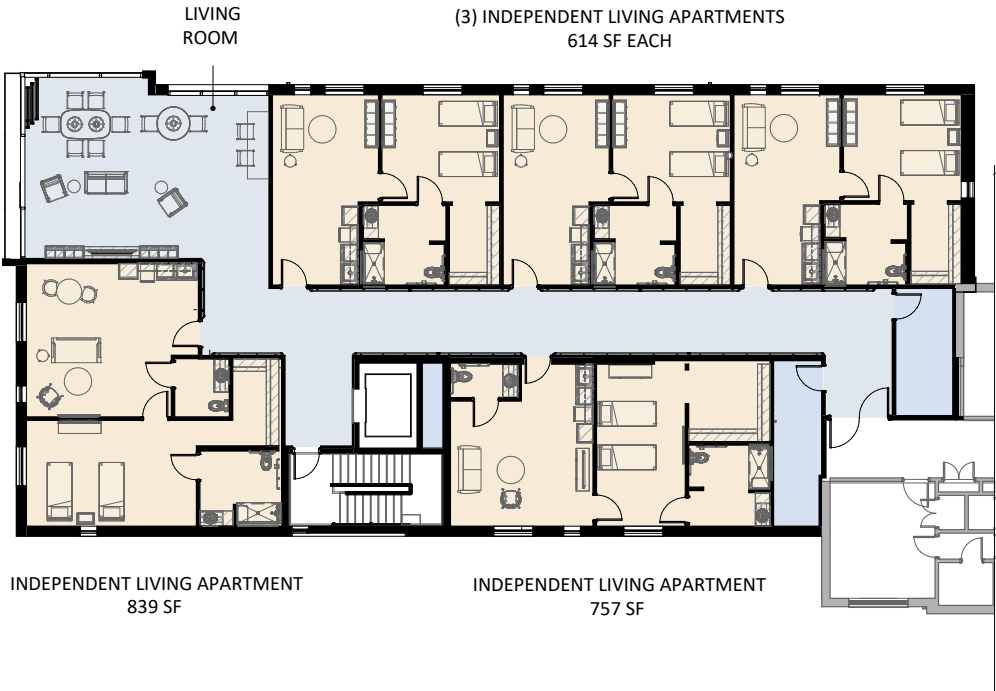
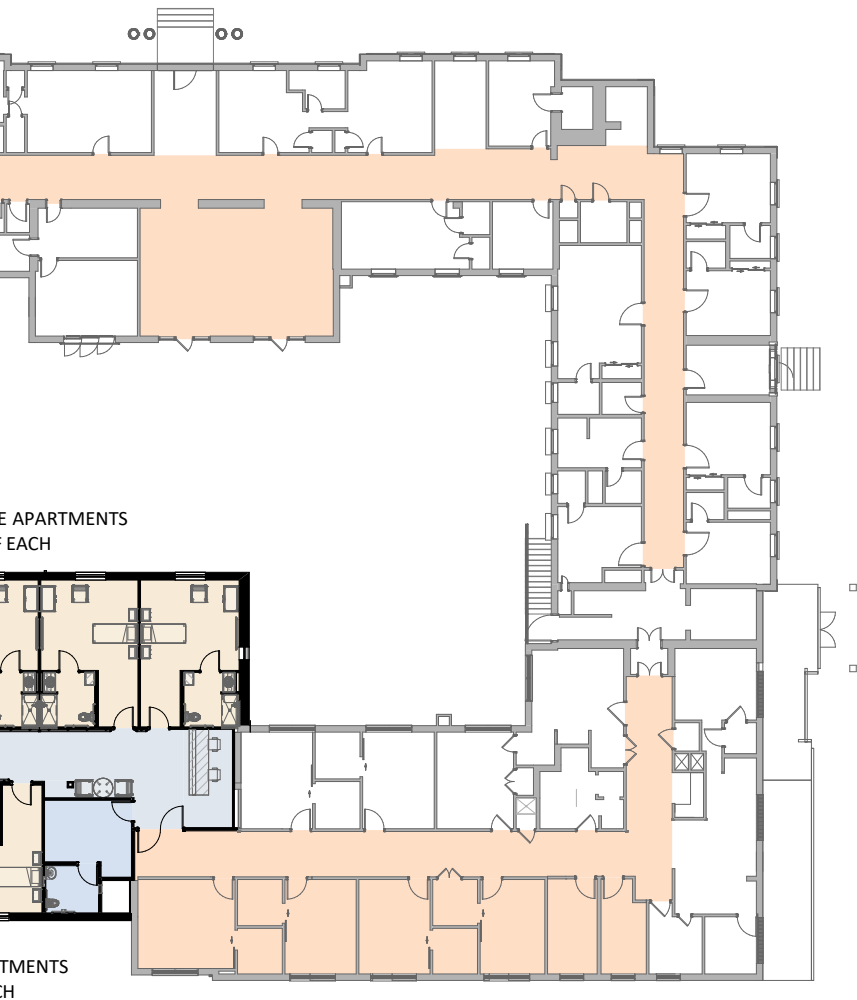
GARDEN LEVEL SCOPE DIAGRAM



FIRST FLOOR SCOPE DIAGRAM



SECOND FLOOR SCOPE DIAGRAM



- COMMON AREAS
- COMPLETED COMMON AREA UPGRADES
- COMPLETED HEALTHCARE APARTMENTS RENOVATION
- HEALTHCARE APARTMENTS
- INDEPENDENT LIVING APARTMENTS
- SUPPORT / SERVICE AREAS

HEALTH CARE AND INDEPENDENT LIVING

On the first floor Health Care Suite, nine health care private apartments will be added. This will increase the option for the number of private rooms from one to sixteen.

A new Dining Room will be created overlooking the garden for our Health Care residents.

On the second floor, five apartments will be added to our Independent Living area to better serve the community, in addition to a new Second Floor Community Living Room.



“I think the plans are exciting – I love the idea of moving the dining room to see the garden.”

LINDA STEFFENSEN

DANISH PIONEER PRESIDENT AND CEO AND
THE DANISH HOME FOUNDATION DEVELOPMENT MANAGER

CHARITABLE CARE

Our residents are also family, so we want to ensure that every one of them can remain at The Danish Home, free of financial worry. Each year, The Danish Home provides several hundred thousand dollars in charitable care to residents, who for whatever reason, have reduced or no ability to pay.

ENDOWMENT

When the building project is done, we plan to start developing a real endowment fund that, in the future campaign, will increase our charitable care.

“We are really glad the Board is thinking about the future.”

HANNE & GENE BEUBE



BUSINESS PLAN

The conservative financial model for this new expansion places The Danish Home of Chicago's operations in a sustainable model based on an occupancy level of 90% for Independent Living and Catered Living and a 70% occupancy level for Nursing Care. This new addition places The Danish Home in a position of strength for its future!

***Paul Pedersen, Chairman of The Danish Association
and Scott L. Swanson, President/CEO of The Danish
Home of Chicago***



WHAT WILL ALL THIS GROWTH COST?

Our goal is a minimum of \$13,000,000.

All the funds raised will pay for the capital needs, and any additional funds raised will go toward The Danish Home Foundation as well as provide funding for any contingencies we encounter.

As we print this brochure, we have already raised **\$9,850,000** towards our Capital Campaign goal, which has made it possible for us to make several renovations to the Healthcare Suites and other areas of The Danish Home. These accomplishments include:

Healthcare: \$1 Million Already Raised For Renovations and Work Is COMPLETED

Cash on Hand: \$4.1 Million

Pledges: \$1.4 Million

Bequests: \$3.3 Million

Please help put us 'over the top' to reach our goal and guarantee The Danish Home's future viability.

We are very grateful to our donors who have already pledged or sponsored various items and areas of the expansion.

Naming opportunities are still available for those who wish to honor our heritage, our mission and/or families and friends:

- **"The Legacy Building"** = Donations of \$500,000 or More will add your name to the building's bronze plaque
- **Private Drive, Parking and Water Conservation Area** = \$500,000
- **2.7 Acre Garden/Landscape Enhancement Project** = \$300,000
- **Heritage Room for Club/Lodge/Organizational Meeting Use** = \$250,000

- **Healthcare Suite Dining/Community Room** = \$200,000
- **Second Floor Community Living Room** = \$200,000
- **Festival Patio** (Main Heritage & Activity Courtyard with outdoor meeting space/picnic area) = \$200,000
- **Five Independent Apartments (for Couples or Individuals)** = \$175,000 Each
- **Overall Garden Plaza** = \$140,000 Including Welcome Flower Garden, Plant & Vegetable Garden, Flag Memorial Plaza and Portico Entrance Plaza
- **Nine Healthcare Apartments** = \$125,000 Each
- **Permanent Donor Wall (Hurlbut Entrance)** = \$100,000
- **Walking Paths in The Danish Home Gardens** = \$50,000
- **Electronic Donor Recognition Screens** = \$25,000 Each
- **Electric Vehicle Charging Stations** = \$25,000 Each
- **Five Benches** = \$10,000 Each
- **Preservation Fund for Danish Home artwork, artifacts and memorabilia** = Any amount is appreciated

BOARD OF DIRECTORS

THE DANISH ASSOCIATION

PAUL PEDERSEN, CHAIRMAN
KIM ERIKSEN, VICE CHAIRMAN
SCOTT L. SWANSON, PRESIDENT/CEO
CHRISTINE HAXAGER, SECRETARY
NEIL ANDERSEN, PAST CHAIRMAN/DIRECTOR
STAN HEIDEMANN, DIRECTOR
DAWN JENSEN, DIRECTOR
MIKAEL OLESEN, DIRECTOR
BRITTANY PEDERSEN, DIRECTOR
KIM RASMUSSEN, DIRECTOR
KAREN PETERSON, WOMEN'S AUXILIARY PRESIDENT

THE DANISH HOME OF CHICAGO

SCOTT L. SWANSON, PRESIDENT/CEO
STAN HEIDEMANN, VICE-CHAIR
KIM ERIKSEN, SECRETARY
FRED SAVIANO, TREASURER

THE DANISH HOME FOUNDATION

PETER ORUM, CHAIRMAN
SCOTT L. SWANSON, PRESIDENT/CEO
PAUL PEDERSEN, VICE-CHAIR
DAWN JENSEN, SECRETARY
BRUCE BRO, DIRECTOR
MIKAEL OLESEN, DIRECTOR

CAPITAL CAMPAIGN COMMITTEE

PETER ORUM, CHAIRMAN
BRUCE BRO
DAWN JENSEN
SUE KELLER
REV. DR. KAREN E. KNUTSON
MIKAEL OLESEN
BRITTANY PEDERSEN
PAUL PEDERSEN
CHERYL ROGE
KIM WOJACK
LINDA STEFFENSEN
SCOTT L. SWANSON
NIKE WHITCOMB



*Front row, l. to. r.: Scott L. Swanson, Christine Haxager, Debi Lathom, Fred Saviano; Middle row, l. to r.: Paul Pedersen, Mikael Olesen, Dawn Jensen, Brittany Pedersen, Peter Orum; Back Row, l. to r.: Karen Peterson, Stan Heidemann, Linda Steffensen, Neil Andersen
(Not Shown: Bruce Bro, Kim Eriksen and Kim Rasmussen)*



The Danish Home of Chicago
The Danish Home Foundation
5656 N. Newcastle Avenue
Chicago, IL 60631

☎ (773) 775-7383
✉ info@DanishHomeofChicago.org
🌐 DanishHomeofChicago.org
📘 facebook.com/danishhomechicago



HOME.

HERITAGE.

HOPE.




The Danish Home
Foundation

